

**IMPACT**  
SURFACE SOLUTIONS

Ph: 0439 846 663  
e: info@impactsurfacesolutions.com.au

# Resin Granite™

Decorative Flake Flooring System

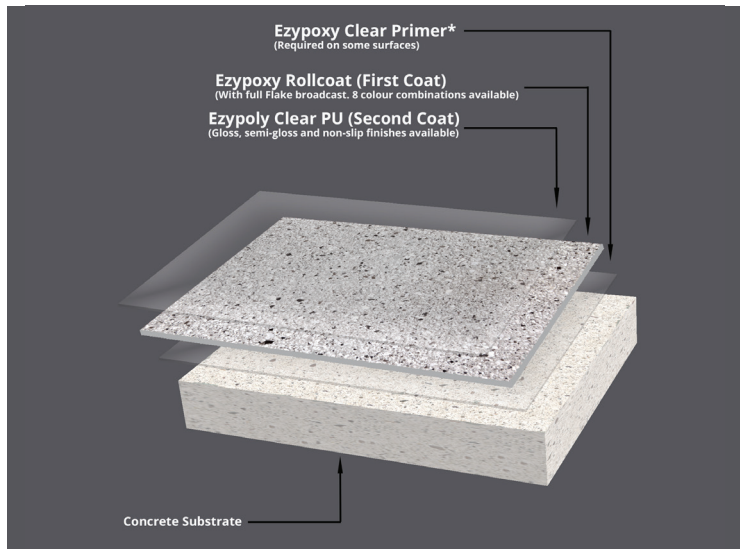
REAL WORLD  
**epoxies**

1300 EPOXIES | info@realworlddepoxies.com | www.realworlddepoxies.com

Resin Granite™ is a one-of-a-kind decorative floor finish specially designed for anybody wanting to give the floors in their home or business a clean, modern granite look.

Available in 8 popular colour combinations, the completely seamless resin flooring system is stain-resistant, incredibly tough, and will keep your floor looking great for years.

Most importantly, Resin Granite™ has no strong smell and contains no solvents or flammables, so it can be installed safely without risk or disruption to your family or business.



## Why you'll love Resin Granite™:

### ✓ SAFER

Resin Granite™ is completely solvent free. No strong smell, disruption or risk to your family or business!

### ✓ MORE DURABLE

Resin Granite™ uses exclusive industrial-grade resin technology, so you won't find it at your local hardware store (or anywhere else).

### ✓ EASY TO CHOOSE

Too many colour options can be overwhelming. We've narrowed it down to 8 we know look good and match well with modern decor.

### ✓ EASY TO CLEAN

The stain-resistant surface handles spills from all common household and commercial chemicals and is easily maintained with normal cleaning equipment.

### ✓ EXTRA OPTIONS

Take your pick of gloss or semi-gloss finishes. If you're worried about slips and falls in the wet, you can even get added slip resistance.

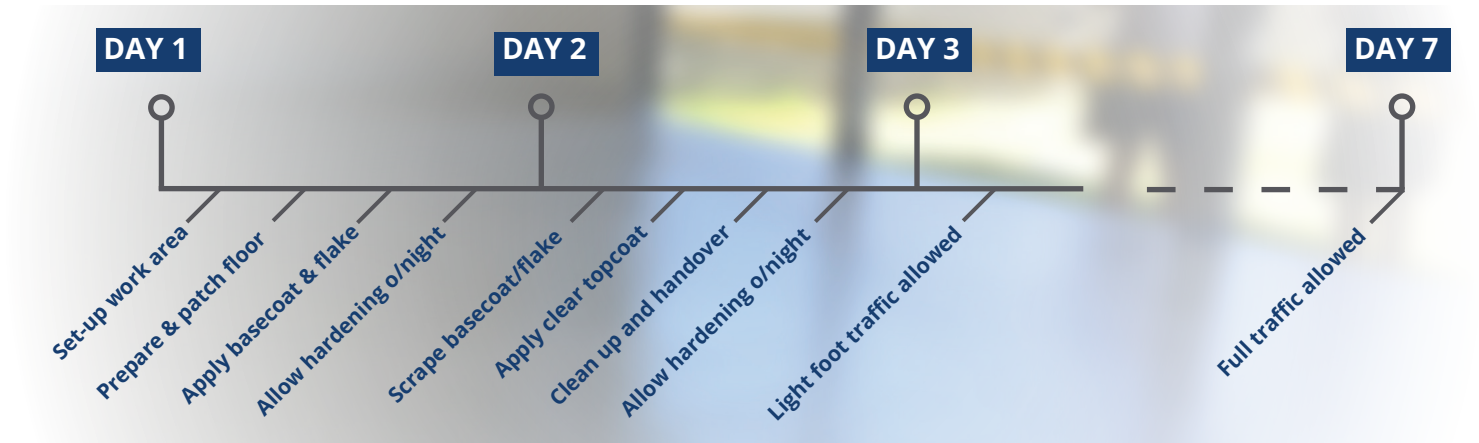




Ideal for:

✓ Garages ✓ Patios ✓ Living Areas ✓ Shops ✓ Restaurants/Cafes

## Installation - how it works



Note - The installation process shown is typical for the standard Resin Granite™ system on concrete floors less than 50m<sup>2</sup>. Removal of existing floors, surface damage/contamination, application of a primer coat, and/or larger areas will generally require more time.

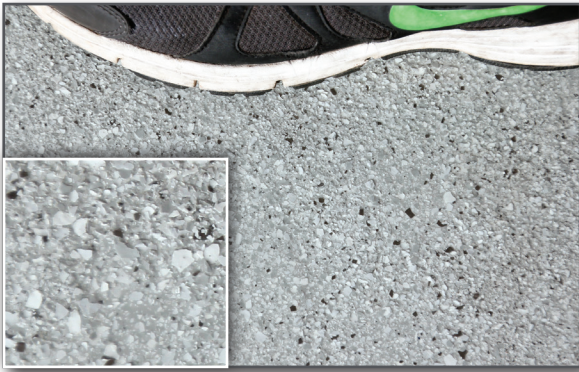
## Getting ready for your new floor

- 1. Plan to be floorless** - a standard Resin Granite™ floor will take a few days and you'll need to stay off the floor the entire time. Keep protective measures in place for the duration and don't try to get back on it earlier than instructed.
- 2. Clear the floor** - remove all items from the floor before the starting date so the flooring technician can get straight to work. If there are heavy items that can't be moved, let them know beforehand.
- 3. Ensure easy access** - make sure the flooring technician can get in and out of the work area and has access to power. If there are any restrictions in this regard, once again it's a good idea to let them know beforehand.
- 4. Seal off** - footprints, bugs and dust don't go well with freshly laid floors. Close all windows, turn off lights and block doorways. If the floor is one part of a larger project, it's best to leave it to last to reduce the risk of other trades damaging it.
- 5. Make yourself available** - checking in with your flooring technician every now and again will make sure everyone stays on the same page and the project progresses as smoothly as possible.





# Resin Granite™ Colour Chart



**Baltic**



**Platinum**



**Ash**



**Gunmetal**



**Ironbark**



**Pebble Beach**



**Tuscany**



**Chestnut**

**\*Colours shown on chart are indicative only. Actual colours may differ slightly.**