

IMPACT
SURFACE SOLUTIONS

Ph: 0439 846 663
e: info@impactsurfacesolutions.com.au

Resin Marble™

Decorative Metallic Flooring System

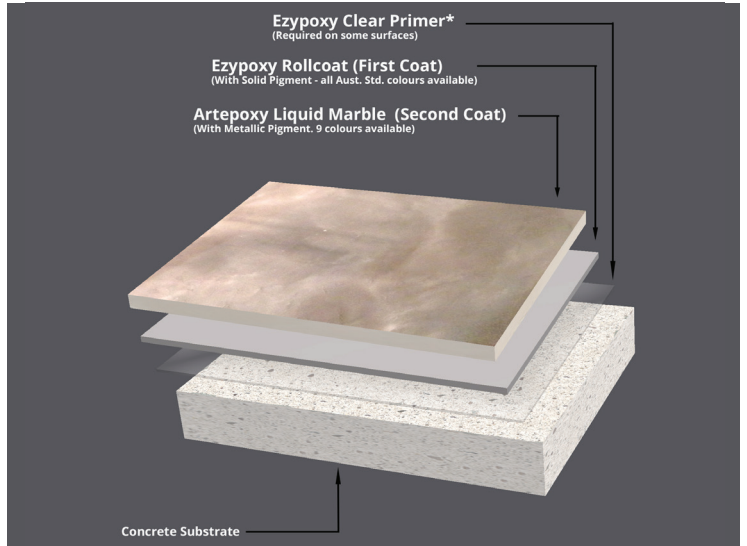
 REAL WORLD
epoxies

1300 EPOXIES | info@realworlddepoxies.com | www.realworlddepoxies.com

Resin Marble™ is a stylish metallic floor finish specially designed for home and business owners wanting a marble look, but without the unsightly grout lines.

Available in 15 stunning colours, the completely seamless resin flooring system is tough, stain-resistant, easy-to-clean, and will remain a real feature for years.

Most importantly, Resin Marble™ has no strong smell and contains no solvents or flammables, so it can be installed safely without risk or disruption to your family or business.



Why you'll love Resin Marble™:

✓ SAFER

Resin Marble™ is completely solvent free. No strong smell, disruption or risk to your family or business!

✓ MORE DURABLE

Resin Marble™ uses exclusive industrial-grade resin technology, so you won't find it at your local hardware store (or anywhere else).

✓ EASY TO CHOOSE

Too many colour options can be overwhelming. We've narrowed it down to a range that covers all popular tastes - from the classic soft and subtle, through to the bold and flamboyant.

✓ EASY TO CLEAN

The seamless, stain-resistant surface handles spills from all common household and commercial chemicals, and is easily maintained with normal cleaning equipment.

✓ EXTRA OPTIONS

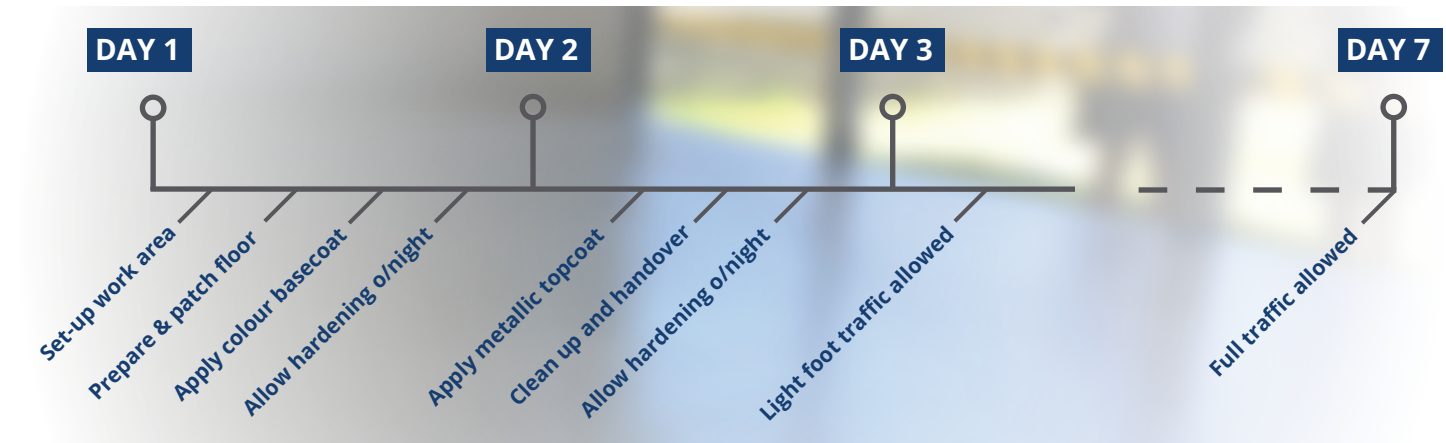
Resin Marble™ offers a high-end, glossy finish as standard. A specialist topcoat can be added to provide your choice of a matte or non-slip finish, as well as extra UV protection.



Ideal for:

✓ Homes ✓ Showrooms ✓ Shops ✓ Restaurants/Cafes

Installation - how it works



Note - The installation process shown is typical for the standard Resin Marble™ system on concrete floors less than 50m². Removal of existing floors, surface damage/contamination, application of a primer coat, and/or larger areas will generally require more time.

Getting ready for your new floor

- 1. Plan to be floorless** - a standard Resin Marble™ floor will take a few days and you'll need to stay off the floor the entire time. Keep protective measures in place for the duration and don't try to get back on it earlier than instructed.
- 2. Clear the floor** - remove all items from the floor before the starting date so the flooring technician can get straight to work. If there are heavy items that can't be moved, let them know beforehand.
- 3. Ensure easy access** - make sure the flooring technician can get in and out of the work area and has access to power. If there are any restrictions in this regard, once again it's a good idea to let them know beforehand.
- 4. Seal off** - footprints, bugs and dust don't go well with freshly laid floors. Close all windows, turn off lights and block doorways. If the floor is one part of a larger project, it's best to leave it to last to reduce the risk of other trades damaging it.
- 5. Make yourself available** - checking in with your flooring technician every now and again will make sure everyone stays on the same page and the project progresses as smoothly as possible.



Resin Marble™ Colour Chart



Pearl



Iron Grey



Pewter



Tungsten



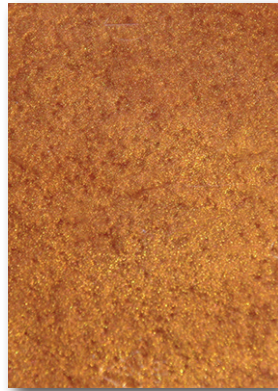
Basalt



Oyster



Oatmeal



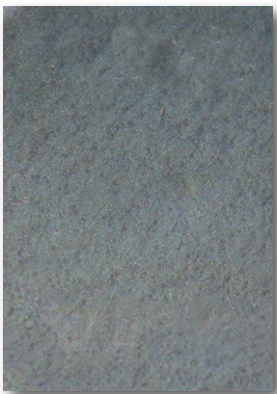
Rose Gold



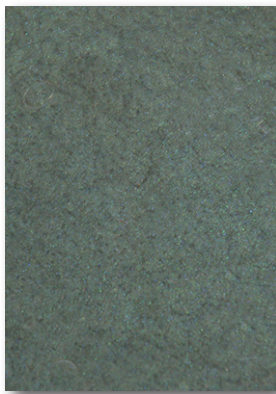
Gold



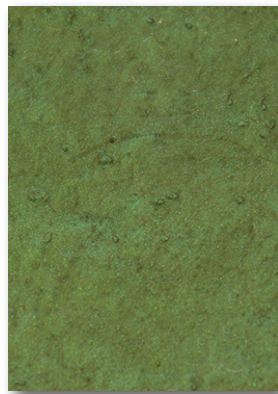
Copper



Sky Blue



Aqua



Green



Red



Dark Chocolate

- Colours shown on chart are photos of samples featuring metallic pigments mixed in Artepoxxy Liquid Crystal.
- Colours are indicative only. Actual colours may differ slightly.
- Black metallic pigment also available for tinting standard colours.